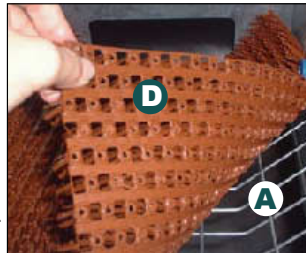


TSIS Twin Roll Back, Belt Gather Nest



Special attention and care was given to the design criteria and construction of this automatic nest to provide the hens with comfortable environment to lay their eggs inside the nests.

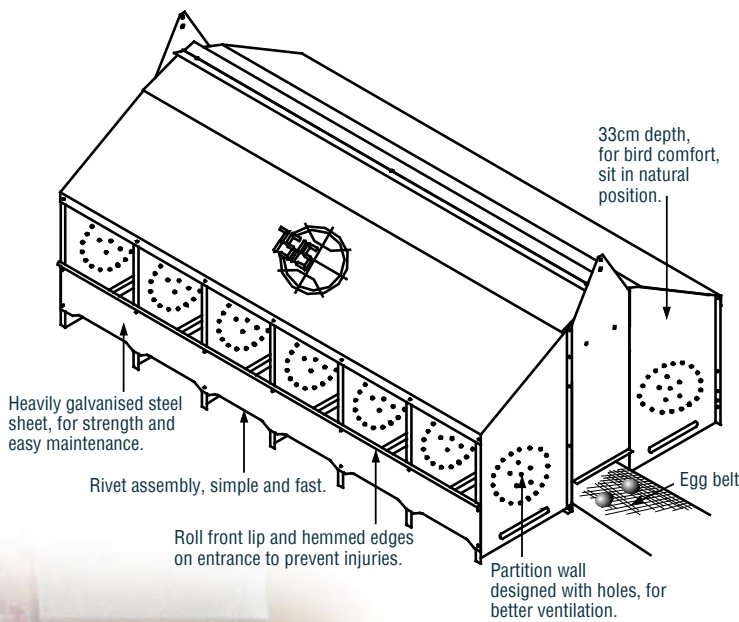
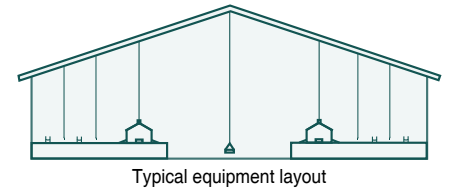
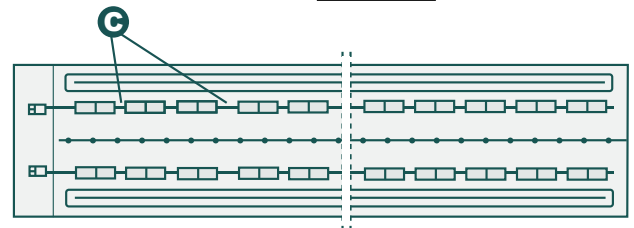
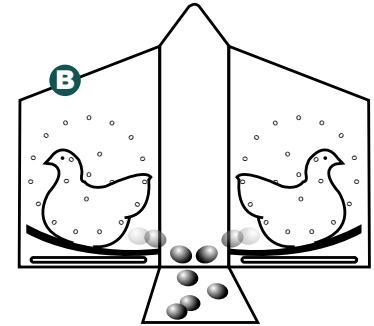
Each nest compartment is equipped with galvanized steel wire basket **A** coupled with a special synthetic grass pad **D** that sits with a proven degree slope and tension to quickly and gently move all the egg in the nest onto the collection belt. Thus, the eggs can be further conveyed safely, with less breakage and floor eggs, to a centralize egg collection station.



The nest allows it to be positioned back to back in lengths running down the poultry house **B**, wherever necessary spaces can be left between the lengths of nests to allow the hens to move around **C**.

Optionally, our nests can be rise from the floor using steel cable and winching system to facilitate cleaning and other maintenance work.

Using a speed controller device, the conveyor speed of the egg collector belt can be adjusted according to respective requirement.



Advantages of TSIS mechanical nest :

- The nest assembly is simple, fast and easy to maintain
- The synthetic pad are durable and fully bordered to resist
 - rips and tears. The pad remain flexible over time,
 - conform to the wire bottom, resist insects, rot, fungus
 - and mildew. It is softer and more gentle to the hens and
 - can be easily removed for cleaning
- The roll front lip and hemmed edges on entrance prevent
 - injuries to the hens
- A wooden perches which ease the hens to access to
 - the nest.
- Less labour required
- More hatching eggs



Perforated nest pad allow droppings to fall through the nest, keep eggs clean and dry.



Variable speed collector works at the pace you desire.



Design with suspension installation possible.